

Wall mounted or mobile washing machine at mean pressure of 20 bar max

Hydra 20/30



The Hydra 20/30 mobile washing machine is a genuine evolution of the species in the medium/low pressure band.

Unique in its sector for compactness, low noise levels, reliability and standard accessories, it enables foaming, rinsing and disinfection processes to be optimised, particularly in the food sector .

The system already incorporates all components, from the electrical panel with indicator lights to control pump rotation direction to the 100% stainless steel dispensing system for foaming and disinfection, creating a highly reliable integrated combination to satisfy all sanitising needs

The frame and trolley are in stainless steel and the washing machine can accommodate two 30 kg detergent containers (mobile version only).

All parts of the machine can be easily inspected for servicing and controls .

The pump absorbs just 2.2 kW, produces a pressure of about 20 bars with a flow rate of more than 30 l/min and can be used with hot water up to 90°C

The controls are low voltage (24 V) and a delayed total stop function shuts down the system when the lance is closed. .

As with all low to medium pressure systems, compressed air must be introduced to produce the foam.

The Hydra 20/30 is also among the most rational washing machines to operate, as to start washing the operator simply turns the lever on the front panel and inserts the lance.

12



Hydra 20/30

12



Wall mounted version
Code 1065



Mobile versions
Code 1067/R
Code 1067/CR

AVAILABLE CONFIGURATION

CODE	MODEL	FLOW RATE (lt/min)	PRESSURE (Bar)	POWER (KW)	AIR COMPRESSOR POWER (KW)	VOLTAGE (Volt)	RPM	WEIGHT (Kg)	DIMENSIONS LxHxD (mm)	WATER IN-LET MAX TEMPERATURE	MAX NUMBER OF OPERATORS
1065	Wall mounted	30/40	20	2.2	-	400 T	2800	60	480x1000x370	90 °C	1
1067/R	Mobile	30/40	20	2.2	-	400 T	2800	98	670x1090x760	90 °C	1
1067/CR	Mobile	30/40	20	2.2	0.75	400 T	2800	112	670x1090x760	90 °C	1

TECHNICAL DETAILS

- Low voltage controls (24 volt).
- Total stop.
- Over temperature 95° C. safety control
- Pressure indicator.
- Controls by electronic flow sensor.
- Multistage s/s centrifugal pump.
- IP65 control panel.
- S/s dosing system complete of by-pass for foam and disinfection
- Compressed air adjustment complete of backflow security.
- Thermoswitch on air compressor (only for versions with air compressor on board)
- S/s frame
- Water lack controls
- Control of the correct sense of motor rotation.

Standard accessories

Hydra 20/30



S/s nozzle 1/4"
Code 194xx

S/s washing lance cm. 90 without nozzle and
Complete of s/s male quick coupling
Code 11211/STS14



S/s foam lance cm 30 complete of nozzle
and s/s male quick coupling
Code 11209/S



S/s pin complete of nozzle
straight jet and protection
Code 90240/S



Bluflood. hose L= 20mt.
S/s Crimped 1/2" female
Code 18262/FFX/20000



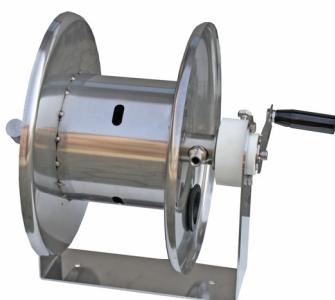
H.P. gun complete of swivel
Code 25103



S/s wall holder for 2 lances
Code 20904
(Only for wall mounted version)



S/s mounting bracket
Code 33804+ Code 33012
(Only for wall mounted version)



S/s manual hose reel
Code 10400/X
(Only for mobile version)

12

Optional accessories

Hydra 20/30



S/s wall holder for hose
Code 20903



S/s nozzle 1/4"
Code 194xx

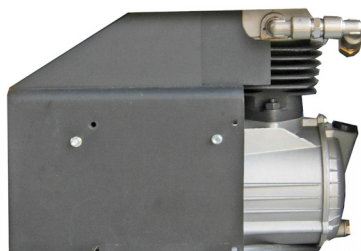
*S/s washing lance cm. 70 without nozzle for
disinfection complete of s/s male quick coupling*
Code 11114/STS14



S/s injector for disinfection
Code 21318/S



S/s automatic hose reel (Without hose)
Code 10500
(Section 50)



Air Compressor 0,75 Kw
400 V Three phases
Code 86905

12

vema®