



EQUIPAGGIAMENTI
TECNICI
LAVAGGIO

TESTINE ROTANTI
MOD. MI63

①

GB

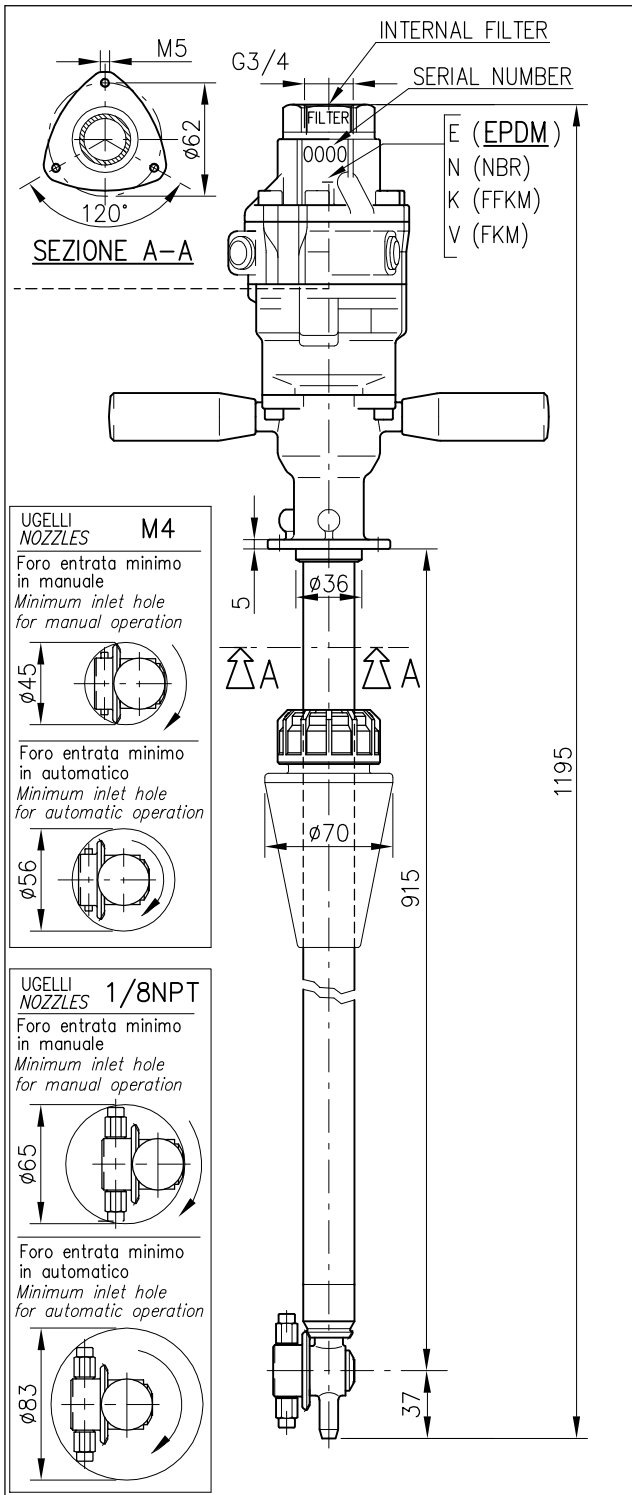
4 06

12.9406.00

06/04/09

MI63

MANUALE D'ISTRUZIONE
GENERAL INSTRUCTION BOOK



TESTINA AUTOMOVENTE PER PULIZIA CISTERNE

- Testina volumetrica, la velocità di rotazione è proporzionale alla portata in ingresso.
- Lavaggio superfici interne di contenitori e serbatoi.
- Portata ridotta, alta pressione, elevata forza di impatto.
- Copertura orbitale completa degli interni.
- Minimo ingombro radiale che ne permette l'introduzione attraverso passaggi ridotti.

- Velocità di rotazione indipendente dalla temperatura dell'acqua.
- Filtro in entrata.
- Costruzione in acciaio inox.
- Idonea per impiego settore alimentare.

ATTENZIONE !

- La Testina STANDARD è fornita di guarnizioni (DINAMICHE) in PTFE + O-Ring EPDM.
- Lubrificare esclusivamente con GRASSO SILICONICO codice: 14.6552.00
- Per l'utilizzo di liquidi detergenti, additivi chimici ecc. non compatibili con le guarnizioni standard è indispensabile contattare il nostro UFFICIO TECNICO.
- A richiesta le guarnizioni (DINAMICHE) O-RING sono disponibili anche in diverso materiale, NBR-FFKM(kalrez)-FKM(viton).
- Le guarnizioni (STATICHE) sono in FKM (viton).

SELF ROTATING CLEANING HEAD

- This is a self-propelled tank cleaning head: when the flow rate increases, the head rotates faster.
- Cleaning of interior surfaces of tanks and drums.
- Reduced flow, high pressure, high cleaning impact.
- Complete orbital coverage of all interior surfaces.
- Small spray turret that fits through reduced tank opening.
- Rotating speed independent from water temperature.
- Inlet filter.
- Stainless steel construction.
- Suitable for utilization in food industry.

ATTENTION !

- The STANDARD Tank cleaning head is supplied with seals (DYNAMIC) in PTFE + O-Ring EPDM.
- Lubricate ONLY with SILICONE GREASE P/N: 14.6552.00
- For use with Detergent liquid, Chemical additives etc that are not compatible with the standard seals, it is essential to contact our TECHNICAL OFFICE for further information.
- On request, the O-RING seals (DYNAMIC) are available in different materials such as NBR-FFKM(kalrez)-FKM(viton).
- The STATIC seals are in FKM (viton).

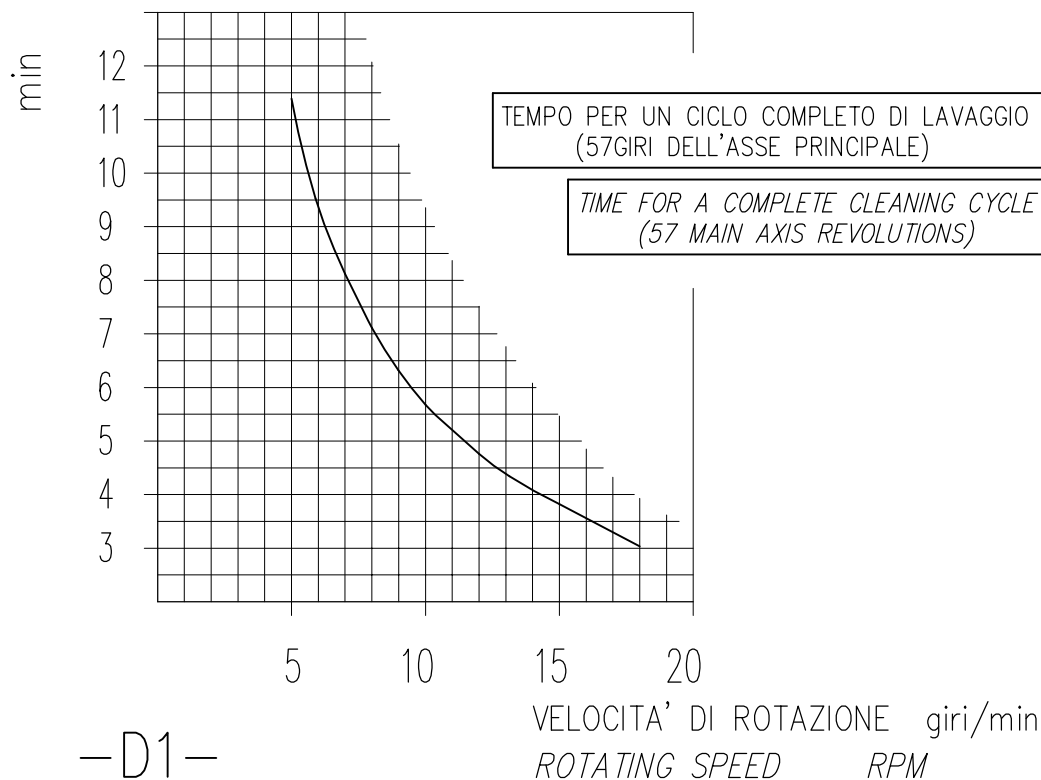
ATTENZIONE: NON UTILIZZARE L'APPARECCHIO PRIMA DI AVER LETTO QUESTO MANUALE DI ISTRUZIONE

CAUTION: DO NOT USE THE CLEANING HEAD BEFORE HAVING READ THE INSTRUCTION BOOK

CARATTERISTICHE TECNICHE

TECHNICAL SPECIFICATIONS

| | | |
|--|--------------------------------------|------------------------|
| – PRESSIONE NOMINALE <i>RATED PRESSURE</i> | 30÷140 bar – 3÷14 MPa (435÷2000 psi) | |
| – PRESSIONE CONSENTITA <i>PERMISSIBLE PRESSURE</i> | 160 bar – 16 MPa (2300 psi) | |
| – PORTATA <i>FLOW RATE</i> | 15 – 40 l/min (4–10.5 USGp.m.) | |
| – TEMPERATURA MASSIMA ACQUA <i>MAX WORKING TEMPERATURE</i> | 0–90°C (32–195°F) | |
| – PESO <i>WEIGHT</i> | 6.85 kg (241,6 oz) (1/8NPT) | 6.8 kg (239,8 oz) (M4) |
| – FREQUENZA ROTAZIONE ASSE PRINCIPALE <i>MAIN AXIS ROTATING SPEED</i> | 10–16 giri/min (RPM) | |
| – ATTACCO ALIMENTAZIONE ACQUA <i>INLET CONNECTION SIZE</i> | G 3/4" | |
| – ATTACCO UGELLI (2 o 4) <i>NOZZLES CONNECTION (2 or 4)</i> | 1/8 NPT | M4 |

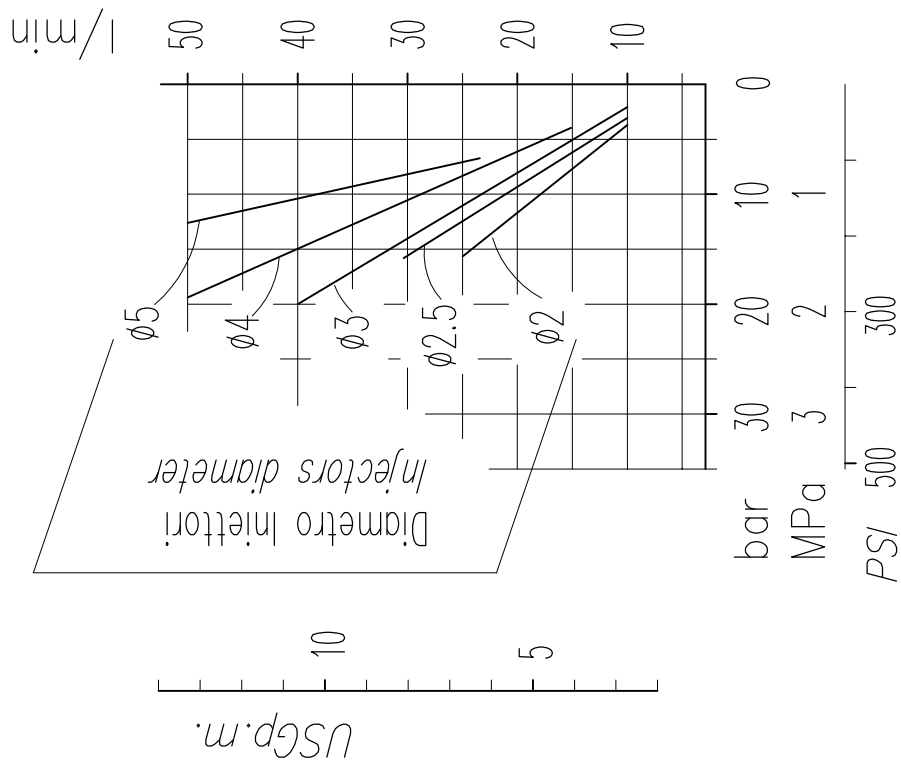


ACCESSORI

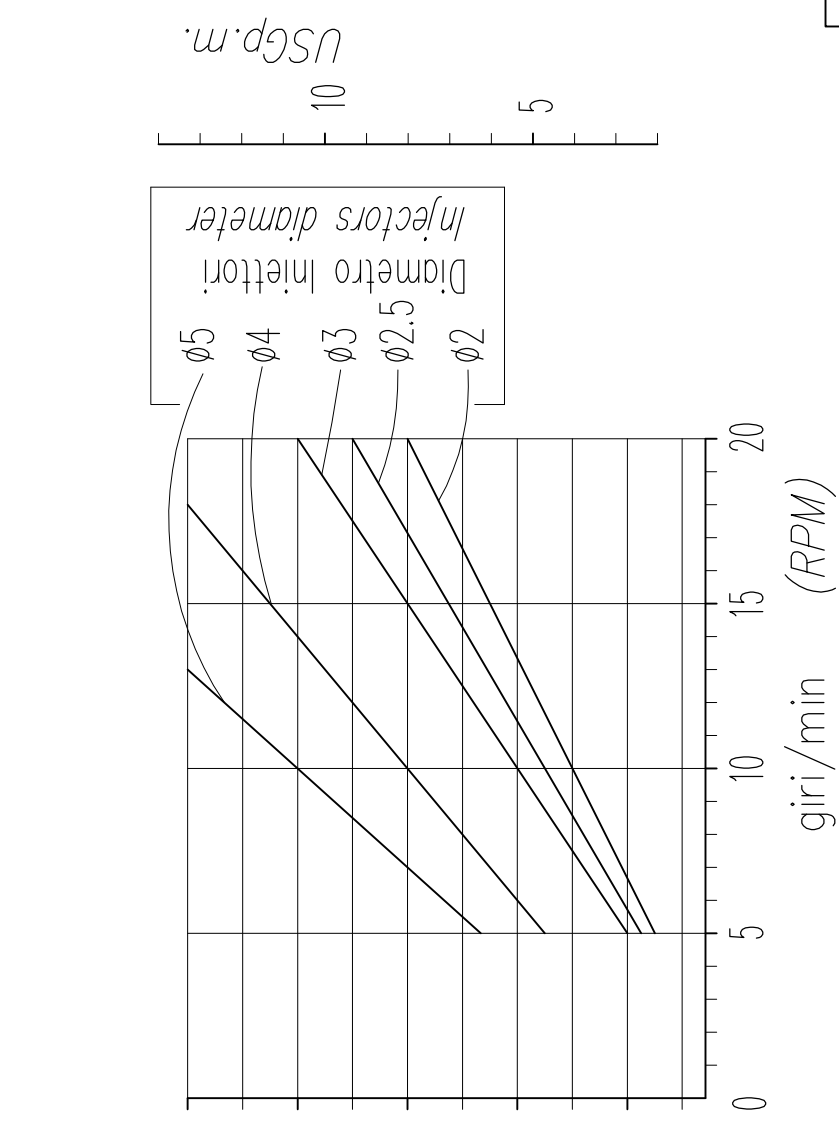
ACCESSORIES

| | |
|---|------------------------|
| – COPERCHIO CHIUSURA ACCIAIO INOX: <i>STAINLESS STEEL COVER:</i> | DIA. 590mm (23 inches) |
|---|------------------------|

CADUTA DI PRESSIONE IN FUNZIONE DELLA PORTATA
 LOSS OF PRESSURE IN RELATION TO FLOW



VARIAZIONE DEI GIRI IN FUNZIONE DELLA PORTATA
 RPM VARIATION IN RELATION TO FLOW



MI63





P.A. – S.p.A. – EQUIPAGGIAMENTI TECNICI DEL LAVAGGIO

VIA MILANO, 13 – CASELLA POSTALE 115 – 42048 RUBIERA (REGGIO EMILIA) – ITALY
 Tel. +39 0522 623611 – Fax. +39 0522 629600 – R.E.A. RE 156319 – R.I. RE11535 – Mecc. RE 013446
 C.F. e P. IVA 01035950359 – Cap. Soc. i.v. € 750.000,00 – Codice Identificativo C.E.E. IT 01035950359
 ART. 2497 – BIS C.C. DIREZIONE E COORDINAMENTO BENETTI srl R.I. TRIB. DI RE 01480690351
 Web: <http://www.pa-etl.it> – E-mail: info@pa-etl.it



Dichiarazione di conformità – Declaration of conformity

(Ai sensi dell'Allegato VII della Direttiva Europea 97/23/CE - PED)
 (In accordance to Annex VII of European Directive 97/23/EC – PED)

| | | | |
|---|-----------|--|-----------------|
| Attrezzatura – Equipment: | | ACCESSORIO A PRESSIONE PRESSURE EQUIPMENT | |
| Modello – Type: | | MI63 e MI85 | |
| Fluido – Fluid: | | ACQUA CALDA E DETERGENTI HOT WATER AND DETERGENTS | |
| Gruppo fluidi: Group of Fluid: | II | Temperatura min. e max. ammissibile Permissible Temperature (min/max) | 0 ÷ 90°C |

Procedura di valutazione della conformità

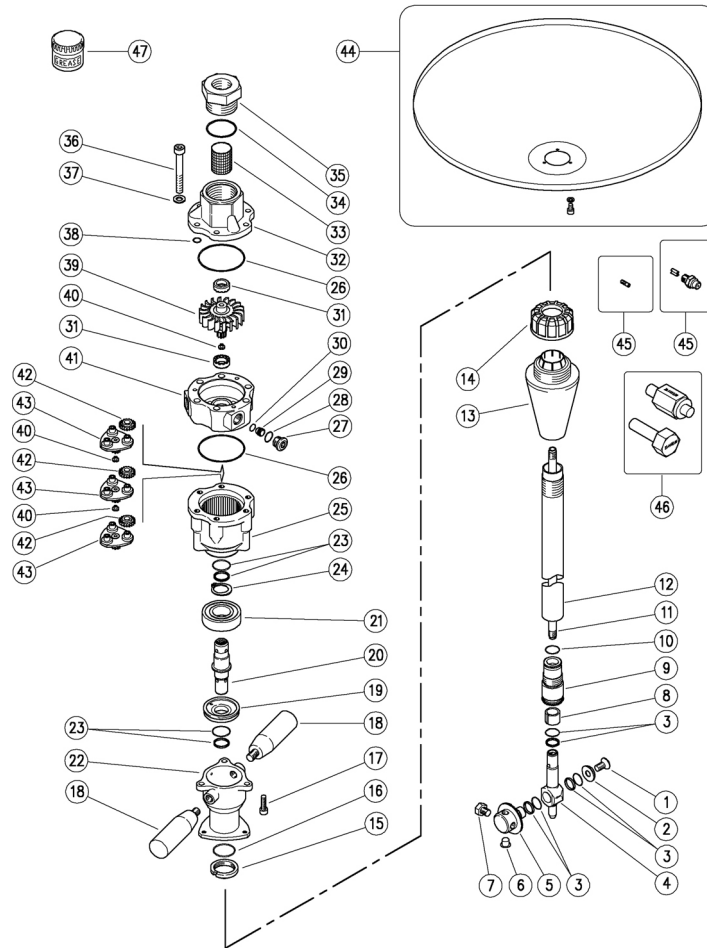
Conformità Assessment Procedure Followed

| | | | |
|--|---|----------------------------|---------------------|
| Categoria: Category: | | Modulo: Module: | Articolo 3.3 |
| Organismo notificato - Notified Body: | ----- | | |
| Attestato CE del tipo - EC Type - Examination Certificate: | ----- | | |
| Marchatura CE del fabbricante - Manufacturer's CE Marking: | ----- | | |
| Organismo Notificato per il Sistema Qualità: Notified Body for Assessment of Quality System: | ----- | | |
| Organismo di certificazione per il Sistema di Qualità: Notified Body for Certification of Quality System: | DNV | | |
| Norme europee applicate: Harmonized Standards applied : | CEI EN 60335-2-79, UNI EN 1829 | | |
| Altre Direttive applicate - Other Directive applied Direttiva Europea – European Directive 2002/95/EC | | | |
| Codici di calcolo: Design Calculations Made: | 764-1, Raccolta ISPESL – Collection: VSR | | |

| | | |
|--|--|--|
| Libretto uso e manutenzione presente nel sito web Operation and Maintenance Manual to be found on Website | Il Fabbricante PA SpA The Manufacturer PA SpA | |
|--|--|--|

25.4600.20 MI63-50 test.mot.idrocin.,iniett.2mm
 25.4600.24 MI63-45 test.mot.idrocin.,iniett.2mm
 25.4600.30 MI63-50 test.mot.idrocin.,iniett.3mm


25.4600.40 MI63-50 test.mot.idrocin.,iniett.4mm
 25.4600.50 MI63-50 test.mot.idrocin.,iniett.5mm
 25.4902.25 MI63A-50-1/8 tes.id/cin.inie.2,5mm Atex 0575




| Pos. | Codice | Descrizione | Q.tà | K1 | K2 | K3 | K4 |  |
|------|------------|-------------------------------------|------|----|----|----|----|--|
| 1 | 16.1954.12 | Vite DIN7991 M8x12 mm inox | 1 | | | | | 10 |
| 2 | 80.0015.51 | Rosetta svas. 8,5x22x4,5mm inox | 1 | | | | | 3 |
| 3 | 10.2030.00 | Guarn. stelo 15x20x2,2 mm +OR | 3 | • | | | | 4 |
| 4 | 80.0005.52 | Respingente M10 inox | 1 | | | | | 1 |
| 5 | 80.0014.51 | Pign.p/ug. z.57, 4x1/8Npt F in. (1) | 1 | | | | | 1 |
| 5 | 80.0016.51 | Pign.p/ug. z.57, M4 FFFF in. (2) | 1 | | | | | 1 |
| 6 | 15.3710.18 | Tappo G1/8" plast. (1) | 2 | | | | | 4 |
| 6 | 15.3704.00 | Tappo M4 plast. (2) | 2 | | | | | 4 |
| 7 | 15.3711.18 | Tappo inox 303 1/8M Npt s/testa (1) | 2 | | | | | 4 |
| 7 | 16.1830.00 | Vite DIN912 M4x8 mm inox (2) | 2 | | | | | 10 |
| 8 | 80.0009.85 | Boccola a. 15x19x14,8mm PTFE | 1 | • | | | | 3 |
| 9 | 80.0027.23 | Pignone z.34 inox+Bocc.a.15mm | 1 | | | | | 1 |
| 10 | 10.3184.10 | An.OR 2,62x18,72 mm Vi 70 | 1 | • | | | | 10 |
| 11 | 80.0003.56 | Tubo M10x1 MM 894mm inox | 1 | | | | | 1 |
| 12 | 80.0052.56 | Tubo M28x1 M 895mm inox | 1 | | | | | 1 |
| 13 | 80.0021.84 | Tappo conico TPEs nero | 1 | | • | | | 3 |
| 14 | 80.0316.84 | Ghiera PP nera | 1 | | • | | | 10 |
| 15 | 80.0012.51 | Ghiera M28x1 inox | 1 | | | | | 1 |
| 16 | 10.3205.10 | An.OR 2,62x26,64 mm Vi 70 | 1 | • | | | | 10 |
| 17 | 16.1896.20 | Vite DIN912 M6x20 mm inox | 3 | | | | | 10 |
| 18 | 13.0600.00 | Manopola M10x15 mm | 2 | | | | | 2 |
| 19 | 80.0233.51 | An. distanziale 18x46,8x10,8mm inox | 1 | | | | | 1 |
| 20 | 80.0232.51 | Albero dentato inox | 1 | | | | | 1 |
| 21 | 11.4420.47 | Cuscinetto 20x47x14 mm - 2RS inox | 1 | • | | | | 2 |
| 22 | 80.0231.52 | Corpo manicotto inox | 1 | | | | | 1 |
| 23 | 10.2030.18 | Guarn. stelo 18x23x2 mm +OR Epdm | 2 | • | | | | 5 |
| 24 | 10.1020.05 | An. elast. E 20 inox | 1 | • | | | | 10 |
| 25 | 80.0207.52 | Corona z.50 inox | 1 | | | | | 1 |

** Varie misure disponibili

*** Su richiesta

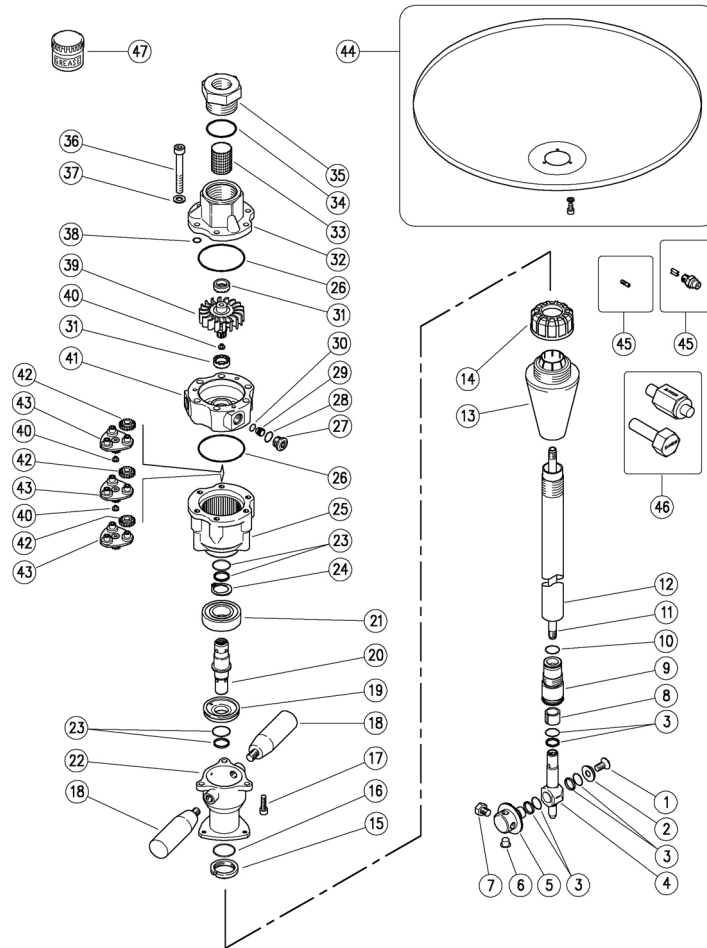
| Kit | Codice | Descrizione |  |
|-----|------------|--------------------------------|---|
| K1 | 25.4608.24 | Kit ric. MI63 9x1pz. | 1 |
| K2 | 25.4630.24 | Kit ric. MI63 - MI85 6x1pz. | 1 |
| K3 | 80.0020.00 | Complet.tappo conic. fissaggio | 1 |

(1) 25.4600.20 (2) 25.4600.24 (3) 25.4600.30 (4) 25.4600.40 (5) 25.4600.50

| Pos. | Codice | Descrizione | Q.tà | K1 | K2 | K3 | K4 |  |
|------|------------|---|------|----|----|----|----|--|
| 26 | 10.3080.58 | An.OR 1,78x56,87 mm Vi 70 | 2 | • | | | | 10 |
| 27 | 80.0219.51 | Tappo EI M14x1 inox | 3 | | | | | 3 |
| 28 | 10.3060.10 | An.OR 1,78x12,42 mm Vi 70 | 3 | • | | | | 10 |
| 29 | 80.0221.51 | Iniettore 2mm inox | 3 | | | | | 3 |
| 29 | 80.0222.51 | Iniettore 3mm inox (3) | 3 | | | | | 3 |
| 29 | 80.0223.51 | Iniettore 4mm inox (4) | 3 | | | | | 3 |
| 29 | 80.0224.51 | Iniettore 5mm inox (5) | 3 | | | | | 3 |
| 30 | 10.3003.00 | An.OR 1x8 mm | 3 | • | | | | 10 |
| 31 | 80.0212.84 | Boccola plastica | 2 | • | | | | 3 |
| 32 | 80.0201.52 | Collettore inox | 1 | | | | | 1 |
| 33 | 28.0014.53 | Rete 38mesh-400µm inox | 1 | | | | | 10 |
| 34 | 10.3208.36 | An.OR 2,62x36,17 mm Vi 70 | 1 | • | | | | 5 |
| 35 | 80.0217.51 | Racc. M40x2 M -G3/4F inox | 1 | | | | | 1 |
| 36 | 16.1955.60 | Vite DIN912 M8x60 mm inox | 6 | | | | | 10 |
| 37 | 14.3573.00 | Rosetta secur. 8,4x2 mm inox | 6 | | | | | 10 |
| 38 | 10.3109.93 | An.OR 2,4x8,3 mm Vi 70 | 3 | • | | | | 10 |
| 39 | 80.0203.52 | Turbina inox | 1 | | | | | 1 |
| 40 | 80.0213.84 | Perno rasamento plast. | 3 | • | | | | 3 |
| 41 | 80.0202.52 | Statore inox | 1 | | | | | 1 |
| 42 | 80.0204.38 | Satellite z.19 bronzo | 9 | • | | | | 3 |
| 43 | 80.0205.00 | Portasatelliti+3 perni inox | 3 | | | | | 1 |
| 45 | 16.1363.45 | Ug. inox 1/8M Npt+ventol. 00.045 ** | 2-4 | | | | | 10 |
| 45 | 25.1091.51 | Ugello 025 - M4 inox rosa *** | 2-4 | | | | | 10 |
| 45 | 25.1190.51 | Ugello 02 - M4 inox verde chiaro *** | 2-4 | | | | | 10 |
| 45 | 25.1093.51 | Ugello 035 - M4 inox marrone *** | 2-4 | | | | | 10 |
| 46 | 25.4631.24 | Kit Attr. Montag. Guarn.-MI63 3pz. *** | 1 | | | | | 1 |
| 47 | 14.6552.00 | Grass.silicone-teflon-30g.>tutti imp. *** | 1 | | | | | 2 |

25.4600.20 MI63-50 Tank cl.,hydr.-driv.,2mm-inject.
 25.4600.24 MI63-45 Tank cl.,hydr.-driv.,2mm-inject.
 25.4600.30 MI63-50 Tank cl.,hydr.-driv.,3mm-inject.


25.4600.40 MI63-50-1/8 inject.4,00mm
 25.4600.50 MI63-50 Tank cl.,hydr.-driv.,5mm-inject.
 25.4902.25 MI63A-50 Tank cl.,hy.-driv.,2,5mm-.Atex 0575



| Pos. | P/N | Description | Q.ty | K1 | K2 | K3 | K4 |  |
|------|------------|---|------|----|----|----|----|--|
| 1 | 16.1954.12 | Screw, DIN7991 M8x12 mm Sst. | 1 | | | | | 10 |
| 2 | 80.0015.51 | C/sunk washer, 8,5x22x4,5mm Sst. | 1 | | | | | 3 |
| 3 | 10.2030.00 | Stem seal, 15x20x2,2 mm +O-ring | 3 | • | | | | 4 |
| 4 | 80.0005.52 | Buffer, M10 Sst. | 1 | | | | | 1 |
| 5 | 80.0014.51 | Nzl hold. pinio.z.57, 4x1/8Npt F sst. (1) | 1 | | | | | 1 |
| 5 | 80.0016.51 | Nzl hold. pinion, z.57, M4 FFFF Sst. (2) | 1 | | | | | 1 |
| 6 | 15.3710.18 | Plug, 1/8" Bsp plast. (1) | 2 | | | | | 4 |
| 6 | 15.3704.00 | Plug, M4 plast. (2) | 2 | | | | | 4 |
| 7 | 15.3711.18 | Grub screw, 303 Sst. 1/8M Npt (1) | 2 | | | | | 4 |
| 7 | 16.1830.00 | Screw, DIN912 M4x8 mm Sst. (2) | 2 | | | | | 10 |
| 8 | 80.0009.85 | Bushing, opn. 15x19x14,8mm PTFE | 1 | • | | | | 3 |
| 9 | 80.0027.23 | Pinion.34 Sst+Bushing,opn.15mm | 1 | | | | | 1 |
| 10 | 10.3184.10 | O-ring, 2,62x18,72 mm Vi 70 | 1 | • | | | | 10 |
| 11 | 80.0003.56 | Tube, M10x1 MM 894mm Sst. | 1 | | | | | 1 |
| 12 | 80.0052.56 | Tube, M28x1 M 895mm Sst. | 1 | | | | | 1 |
| 13 | 80.0021.84 | Tapered plug, TPEs black | 1 | | • | | | 3 |
| 14 | 80.0316.84 | Ring nut, PP black | 1 | | • | | | 10 |
| 15 | 80.0012.51 | Ring nut, M28x1 Sst. | 1 | | | | | 1 |
| 16 | 10.3205.10 | O-ring, 2,62x26,64 mm Vi 70 | 1 | • | | | | 10 |
| 17 | 16.1896.20 | Screw, DIN912 M6x20 mm Sst. | 3 | | | | | 10 |
| 18 | 13.0600.00 | Knob M10x15 mm | 2 | | | | | 2 |
| 19 | 80.0233.51 | Spacer ring, 18x46,8x10,8mm Sst. | 1 | | | | | 1 |
| 20 | 80.0232.51 | Geared shaft, Sst. | 1 | | | | | 1 |
| 21 | 11.4420.47 | Ball-bearing, 20x47x14 mm - 2RS Sst. | 1 | • | | | | 2 |
| 22 | 80.0231.52 | Housing sleeve, Sst. | 1 | | | | | 1 |
| 23 | 10.2030.18 | Stem seal, 18x23x2 mm +O-ring Epdm | 2 | • | | | | 5 |
| 24 | 10.1020.05 | Snap ring, E 20 Sst. | 1 | • | | | | 10 |
| 25 | 80.0207.52 | Ring gear, z.50 Sst. | 1 | | | | | 1 |

** Different measures available

*** On request

| Kit | P/N | Description |  |
|-----|------------|----------------------------------|---|
| K1 | 25.4608.24 | Spares Kit - M163 9x1pcs. | 1 |
| K2 | 25.4630.24 | Spares Kit - M163 - M185 6x1pcs. | 1 |
| K3 | 80.0020.00 | Tapered plug -M63 | 1 |

(1) 25.4600.20 (2) 25.4600.24 (3) 25.4600.30 (4) 25.4600.40 (5) 25.4600.50

| Pos. | P/N | Description | Q.ty | K1 | K2 | K3 | K4 |  |
|------|------------|---------------------------------------|------|----|----|----|----|--|
| 26 | 10.3080.58 | O-ring, 1,78x56,87 mm Vi 70 | 2 | • | | | | 10 |
| 27 | 80.0219.51 | Plug, int.hex., M14x1 Sst. | 3 | | | | | 3 |
| 28 | 10.3060.10 | O-ring, 1,78x12,42 mm Vi 70 | 3 | • | | | | 10 |
| 29 | 80.0221.51 | Injector, 2mm Sst. | 3 | | | | | 3 |
| 29 | 80.0222.51 | Injector, 3mm Sst. (3) | 3 | | | | | 3 |
| 29 | 80.0223.51 | Injector, 4mm Sst. (4) | 3 | | | | | 3 |
| 29 | 80.0224.51 | Injector, 5mm Sst. (5) | 3 | | | | | 3 |
| 30 | 10.3003.00 | O-ring, 1x8 mm | 3 | • | | | | 10 |
| 31 | 80.0212.84 | Bushing, plast. | 2 | | • | | | 3 |
| 32 | 80.0201.52 | Manifold, Sst. | 1 | | | | | 1 |
| 33 | 28.0014.53 | Net, 38mesh-400µm Sst. | 1 | | | | | 10 |
| 34 | 10.3208.36 | O-ring, 2,62x36,17 mm Vi 70 | 1 | • | | | | 5 |
| 35 | 80.0217.51 | Coupl., M40x2 M -3/4F Bsp Sst. | 1 | | | | | 1 |
| 36 | 16.1955.60 | Screw, DIN912 M8x60 mm Sst. | 6 | | | | | 10 |
| 37 | 14.3573.00 | Safet. washer, 8,4x2 mm Sst. | 6 | | | | | 10 |
| 38 | 10.3109.93 | O-ring, 2,4x8,3 mm Vi 70 | 3 | • | | | | 10 |
| 39 | 80.0203.52 | Turbine, Sst. | 1 | | | | | 1 |
| 40 | 80.0213.84 | Shim pin, plast. | 3 | | • | | | 3 |
| 41 | 80.0202.52 | Stator, Sst. | 1 | | | | | 1 |
| 42 | 80.0204.38 | Planetary gear, z.19 brz | 9 | | • | | | 3 |
| 43 | 80.0205.00 | Planetary gear holder+3 pins, Sst. | 3 | | | | | 1 |
| 45 | 16.1363.45 | Nzl, sst,1/8M Npt+guid.vane 00.045 ** | 2-4 | | | | | 10 |
| 45 | 25.1091.51 | Nozzle, 025 - M4 Sst. pink *** | 2-4 | | | | | 10 |
| 45 | 25.1190.51 | Nozzle, 02 - M4 Sst. light green *** | 2-4 | | | | | 10 |
| 45 | 25.1093.51 | Nozzle, 035 - M4 Sst. brown *** | 2-4 | | | | | 10 |
| 46 | 25.4631.24 | Seal Setup Tool Kit - M163 3pcs. *** | 1 | | | | | 1 |
| 47 | 14.6552.00 | Teflon silicon grease x30g.>All *** | 1 | | | | | 2 |