

Wall mounted or mobile medium pressure Washing machine 12 bar max

Hydra 12/25



Wall mounted version



Wheeled version



Mobile version

The Hydra compact 12/25 is a latest generation low pressure washing machine designed and produced by VEMA to satisfy the demands of an ever more selective and demanding market .

The frame, pump and all control components are entirely made from stainless steel to satisfy the user's expectations and guarantee incomparable long term reliability with minimum noise levels. .

Easy to use, compact, with a low maintenance requirement and excellent long term durability, it saves on both water and detergent by optimising all washing phases, obtaining excellent results .

The pump absorbs just 1.3 kW, produces a pressure of about 12 bars with a maximum flow rate of 35 l/min and can be used with hot water up to 90°C

The controls are low voltage (24 V) and a delayed total stop function shuts down the system when the lance is closed.

As with all low to medium pressure systems, compressed air must be introduced for foaming .

Water consumption during foaming is just 4 l/min with coverage of about 50/60 m² per minute and detergent consumption of less than 3%.

Finally, if compressed air is not available, a version with built-in compressor is also available.

The Hydra 12/25 is also among the most rational washing machines to operate, as to start washing the operator simply turns the lever on the front panel and inserts the lance .

11



Hydra 12/25

11



Wheeled version



Wall mounted version



Mobile version

AVAILABLE CONFIGURATION

CODE	MODEL	FLOW RATE (lt/min)	PRESSURE (Bar)	POWER (KW)	RPM	AIR COMPRESSOR POWER (KW)	VOLTAGE (Volt)	WEIGHT (Kg)	DIMENSIONS LxHxD (mm)	WATER IN-LET MAX TEMPERATURE	MAX NUMBERS OF OPERATORS
1060	Wall mounted	25/35	12/10	1,3	2800	-	230 MF	35	500 x 350 x 350	70 °C	1
1060/R	Mobile	25/35	12/10	1,3	2800	-	230 MF	55	500 x 1040 x 750	70 °C	1
1061	Wall mounted	25/35	12/10	1,3	2800	-	400 T	35	500 x 350 x 350	70 °C	1
1061/C	Wall mounted	25/35	12/10	1,3	2800	1,5	400 T	48	500 x 350 x 350	70 °C	1
1061/R	Mobile	25/35	12/10	1,3	2800	-	400 T	55	500 x 1040 x 750	70 °C	1
1061/CR	Mobile	25/35	12/10	1,3	2800	1,5	400 T	68	500 x 1040 x 750	70 °C	1
1059/R	Wheeled *	25/35	12/10	1,3	2800	-	400 T	70	550 x 1000 x 1000	70 °C	1
1059/CR	Wheeled *	25/35	12/10	1,3	2800	0,4	400 T	74	550 x 1000 x 1000	70 °C	1

* Manuale Hose Reel included - With Dual Holder Tank: Dimensions (LxHxD) : 550 x 1000 x 1014

TECHNICAL DETAILS

- Low voltage controls (24 volt).
- Total stop.
- Over temperature 95 °C. safety control
- Pressure indicator.
- Controls by electronic flow sensor.
- S/s multistage centrifugal pump.
- IP65 control panel
- S/s dosing system Aisi/316 complete of by-pass for foam and disinfection
- Compressed air adjustment complete of backflow security .
- Thermoswitch on air compressor (only for versions with air compressor on board)
- S/s frame
- Water lack controls
- Control of the correct sense of motor rotation .

Standard accessories

Hydra 12/25



S/s nozzle 1/4"
Code 194xx

S/s washing lance without nozzle complete of male s/s coupling
(cm 70 only for wall mounted versions) **Code 11114/STS14**
(cm 90 only for wheeled versions) **Code 11211/STS14**



S/s foam lance cm 30 complete of nozzle
and s/s male quick coupling
Code 11209/S



S/s pin complete of nozzle
straight jet and protection
Code 90240/S



Bluford hose. hose L= 20mt.
S/s Crimped 1/2" female
Code 18262/FFX/20000



H.p. gun with swivel
Code 25103



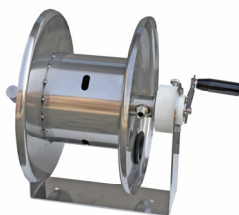
S/s wall holder for hose
Code 20903



S/s mounting bracket
Code 33011+ Code 33012

11

Optional accessories



S/s manual hose reel
Code 10400/X
(Section 51)



S/s automatic hose reel (without hose)
Code 10500
(Section 50)

vema®