

Wall mounted or mobile medium pressure

Washing machine 40 Bar Max

Hydra 40/21



Wall mounted version



Wheeled version

The Hydra compact 40/21 is a genuine evolution of the species in the medium/low pressure band .

Unique in its sector for compactness, low noise levels, reliability and standard accessories, it enables foaming, rinsing and disinfection processes to be optimised .

The system already incorporates all components, from the electrical panel to the 100% stainless steel dispensing system for foaming and disinfection, creating a highly reliable integrated combination to satisfy all sanitising needs. .

The frame is in stainless steel and all parts of the machine can be easily inspected for servicing and control.

The pump absorbs just 2.5 kW, produces a pressure of about 40 bars with a flow rate of 21 l/min and is suitable for use with hot water up to 75°C.

The controls are low voltage (24 V) and a delayed total stop function shuts down the system when the lance is closed. .

As with all low to medium pressure systems, compressed air must be introduced to produce the foam.

The Hydra 40/21 is also one of the most rational washing machines to use as the operator has simply to turn the knob on the front panel and insert the lance .

13



Hydra 40/21

13



Wall mounted version



Wheeled version

AVAILABLE CONFIGURATION

CODE	MODEL	FLOW RATE (lt/min)	PRESSURE (Bar)	POWER (KW)	VOLTAGE (Volt)	RPM	WEIGHT (Kg)	DIMENSIONS LxHxD (mm)	WATER IN-LET MAX TEMPERATURE	MAX NUMBER OF OPERATORS
1062	Wall mounted	21	20-40	2,5	230 M	1450	45	580x350x350	70 °C	1
1063	Wall mounted	21	20-40	2,5	400 T	1450	45	580x350x350	70 °C	1
1063/R	Mobile	21	20-40	2,5	400 T	1450	50	580x1200x350	70 °C	1
1062/R	Mobile	21	20-40	2,5	230 M	1450	50	580x1200x350	70 °C	1

TECHNICAL DETAILS

- Low voltage controls (24 volt).
- Total stop.
- Over temperature 75 °C. safety controls
- Pressure indicator.
- Pressure adjustment
- Controls by flow sensor.
- Pump with 3 ceramic pistons complete of special seals kit for high temperature.
- IP65 control panel.
- S/s dosing system complete of by-pass for foam and disinfection
- Compressed air adjustment complete of backflow security.
- S/s frame.
- Water lack controls.

Standard accessories

Hydra 40/21



S/s washing lance cm 70 without nozzle complete of pin Ø14
Code 11155/ST18



S/s nozzle 1/8"
Code 190xx



S/s mounting bracket
Code 33011+ Code 33012



S/s foam lance cm 30
Complete of nozzle and pin Ø14
Code 11208



Gun with pin Ø 14
Code 25095/ST



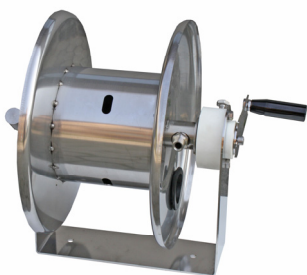
H.p. hose. R/2 L= 15mt. Crimped 3/8"
female zinc.
Code 18215



S/s wall holder for hose
Code 20903

13

Optional accessories



S/s manual hose reel
Code 10400/X
(Section 51)



S/s automatic hose reel (Without hose)
Code 10300
(Section 50)

vema®