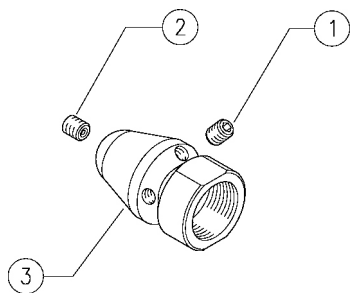


**25.1236.20 RU20 Drain cl.nozzle,nick.pl.1/2Bsp F**



**25.1236.30 RU30 Drain cl.nozzle,nick.pl.1/2Bsp F**

K1 K2 K3 K4 

1	25.1255.51	Nozzle, 055 - M6 Sst. (1)	5					10
1	25.1252.51	Nozzle, 035 - M6 Sst. (2)	5					10
2	25.1251.51	Nozzle, 025 -M6 Sst. (1)	1					10
2	25.1251.51	Nozzle, 025 -M6 Sst. (2)	1					10

(1) 25.1236.30 (2) 25.1236.20