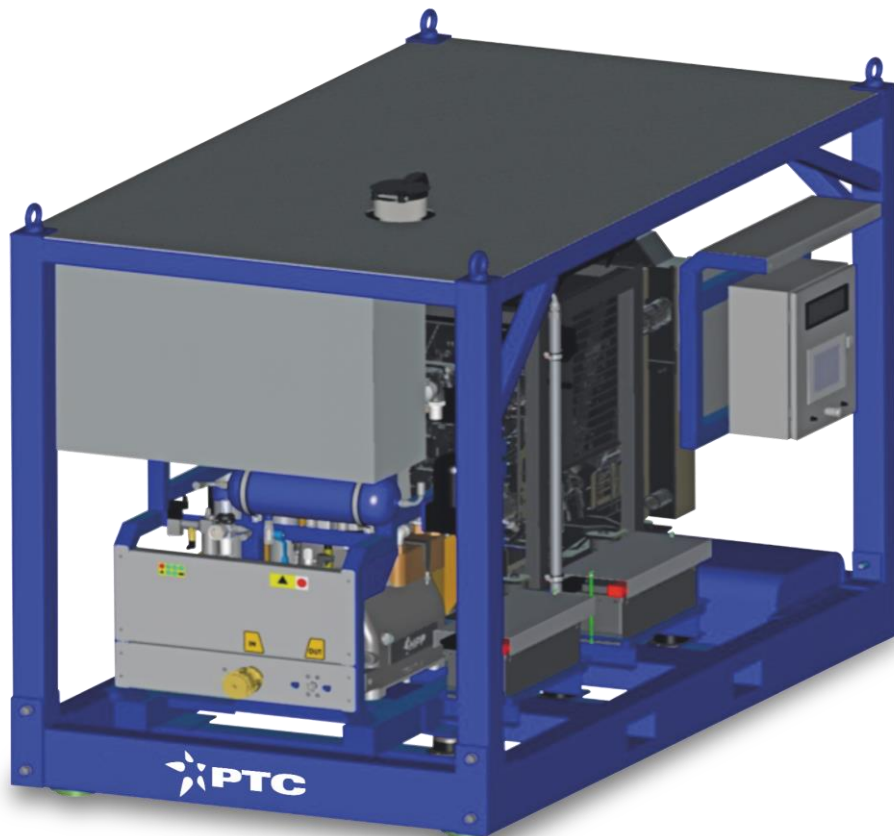




# PTC-4D



## UNIT

## UNITÀ

	<b>110 kW - 150 CV/HP</b>
	Direct transmission by joint with elastic element and protective cover / <i>Trasmissione diretta con elemento elastico intermedio e carter di protezione</i>
	3000 mm x 1600 mm x 2200 mm 118,1 inch x 63 inch x 86,6 inch
	2500 Kg - 5512 lbs
	<b>HPP Serie H150</b>

**PERFORMANCE****PRESTAZIONI**

Pompa Pump	Configurazione Configuration	Portata Flow [l/min]	Portata Flow [gpm]	Pressione Pressure [Bar]	Pressione Pressure [kpsi]	[kW]	[hp]
H150 SAP-45	LP	190	50.2	320	4.6	110	150
H150 SAP-40	LP	150	39.6	400	5.8		
H150 SAP-35	LP	109	28.8	560	8.1		
H150 SAP-32	LP	96	25.3	640	9.3		
H150 SAP-30	MP	83	21.9	750	10.9		
H150 SAP-28	MP	74	19.6	830	12		
H150 SAP-26	MP	63	16.6	1000	15		
<b>H150 SAP-24</b>	<b>HP</b>	<b>54</b>	<b>14.2</b>	<b>1200</b>	<b>17.4</b>		
H150 SAP-22	HP	46	12.1	1400	20		
H150 UAP-20	UHP	34	9.0	1800	26.1		
H150 UAP-18	UHP	27	7.2	2200	32		
H150 UAP-16	UHP	22	5.8	2800	40		

**CONFIGURATION****CONFIGURAZIONI**

<b>Bassa Pressione</b> <b>Low Pressure</b> <b>LP</b> $p \leq 700\text{bar}$	LPm	Versione Manuale	Manual version
	LPn	Versione pneumatica	Pneumatic version
	LPX	Versione elettronica	Automatic version
<b>Media Pressione</b> <b>Medium Pressure</b> <b>MP</b> $700\text{bar} < p \leq 1000\text{bar}$	MPm	Versione Manuale	Manual version
	MPn	Versione pneumatica	Pneumatic version
	MPX	Versione elettronica	Automatic version
<b>Alta Pressione</b> <b>High Pressure</b> <b>HP</b> $1000\text{bar} < p \leq 1500\text{bar}$	HPm	Versione Manuale	Manual version
	<b>HPn</b>	<b>Versione pneumatica</b>	<b>Pneumatic version</b>
	HPX	Versione elettronica	Automatic version
<b>Altissima Pressione</b> <b>Ultra High Pressure</b> <b>UHP</b> $p > 1500\text{bar}$	UHPm	Versione Manuale	Manual version
	UHPn	Versione pneumatica	Pneumatic version
	UHPX	Versione elettronica	Automatic version

**H150 UAP PUMP (by HPP)****POMPA H150 UAP (HPP)**

Plungers: <i>Pistoni</i>	Solid tungsten carbide <i>Carburo di Tungsteno</i>	
Lubrication <i>Lubrificazione</i>	Forced with oil cooler <i>Forzata con scambiatore di calore</i>	
Gear box <i>Riduttore</i>	Internal <i>Interno</i>	(1500rpm; 1800rpm)
Pump crank case <i>Meccanica</i>	Cast iron <i>Ghisa</i>	
Pump head <i>Testata</i>	Stainless Steel AISI 630 <i>Inox AISI 630</i>	
Crankshaft speed <i>Velocità albero</i>	500 rpm	
Weight <i>Peso</i>	400 kg	
Min. water inlet pressure	6 bar	
Max water inlet temp.	30°C	

**H150 SAP PUMP (by HPP)****POMPA H150 SAP (HPP)**

Plungers: <i>Pistoni</i>	Solid tungsten carbide <i>Carburo di Tungsteno</i>	
Lubrication <i>Lubrificazione</i>	Forced with oil cooler <i>Forzata con scambiatore di calore</i>	
Gear box <i>Riduttore</i>	Internal <i>Interno</i>	(1500rpm; 1800rpm)
Pump crank case <i>Meccanica</i>	Cast iron <i>Ghisa</i>	
Pump head <i>Testata</i>	Stainless Steel AISI 630 <i>Inox AISI 630</i>	
Crankshaft speed <i>Velocità albero</i>	500 rpm	
Weight <i>Peso</i>	400 kg	
Min. water inlet pressure	3 bar	
Max water inlet temp.	30°C	

**DIESEL ENGINE****MOTORE DIESEL**

Engine Motore	FPT N45ENTHW20.5	Emission level Emissioni	EPA & CARB Tier 4B/Tier 4F 97/68/EC Stage IV/Stage V
Max power <i>Potenza massima</i>	125kW @ 2200rpm	Displacement <i>Cilindrata</i>	4.5 l
Cylinders: <i>Cilindri</i>	4	Dry Weight <i>Peso</i>	n/a



Electronic diesel engine, Turbo, water cooled with electric starter and HI-eSCR aftertreatment technology. Power Pack version.

Motore diesel elettronico, turbo, raffreddato ad acqua. Avviamento elettrico e tecnologia "HI-eSCR aftertreatment". Versione Power Pack.

For extra CEE market, available on request:

Engine Motore	FPT N67MNT	Emission level Emissioni	EPA & CARB Tier III 97/68/EC Stage IIIA
Max power Potenza massima	129kW @ 2200rpm	Displacement Cilindrata	6.7 l
Cylinders: Cilindri	6	Dry Weight Peso	n/a

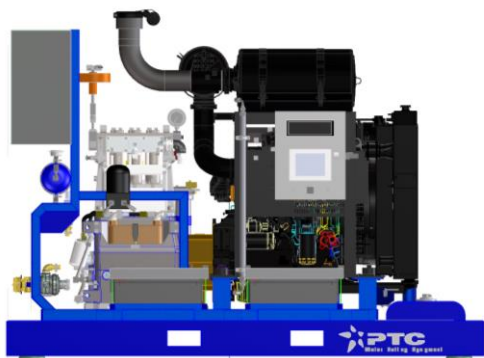


**VERSION**

**ALLESTIMENTO**

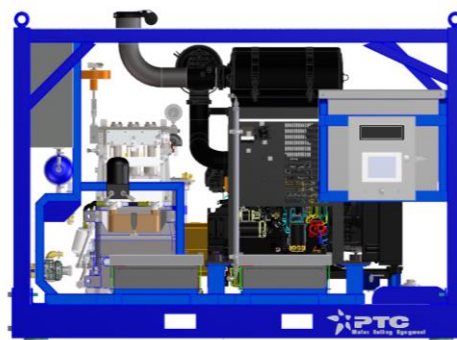
FRAME/TELAIO

Skid/Basamento



Extremely compact base unit mounted on steel frame with vibration-damping mounts, suitable for fixed installation in vehicles, trailers or containers.  
**Dimension** (approx.): 3.000x1.500x1.500 mm  
**Weight** (approx.): 2.500 kg

Skid + Roof



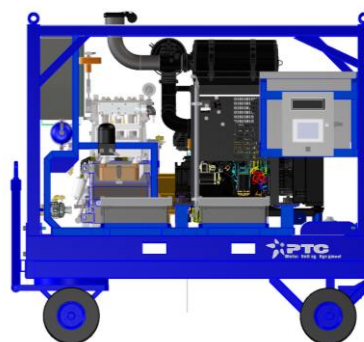
Compact unit mounted on steel frame with openings for easy transport with forklift, designed for stationary use in industrial plants or construction sites with limited space.  
 Available on request in trolley version.  
**Dimension** (approx.): 3.000x1.700x1.700 mm  
**Weight** (approx.): 3.000 kg

Skid + Soundproof canopy/ Basamento + Cabina insonorizzata



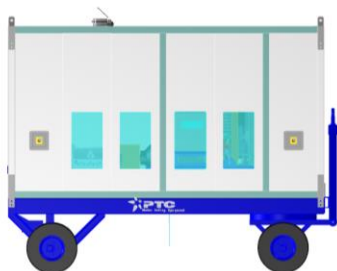
Compact unit mounted on a steel frame with openings for easy transport with forklift, designed for stationary use in industrial plants or construction sites with open spaces. Equipped with a fiberglass casing that protects the unit from any external agents.  
**Dimension** (approx.): 3.000x1.500x2.250 mm  
**Weight** (approx.): 4.000 kg

Trolley mount + Roof/Telaio con carrello+tetto di copertura



In the trailer configuration/trolley configuration the base unit is mounted on double axis trolley made of treated steel, for a maximum total weight of 3.5 tonnes. Ideal for application on construction sites where ease of transport is a must.  
**Dimension** (approx.): 3.000x1.750x2.250 mm  
**Weight** (approx.): 3.500 kg

A) Trolley mount + Soundproof canopy/ Telaio con carrello + Cabina insonorizzata



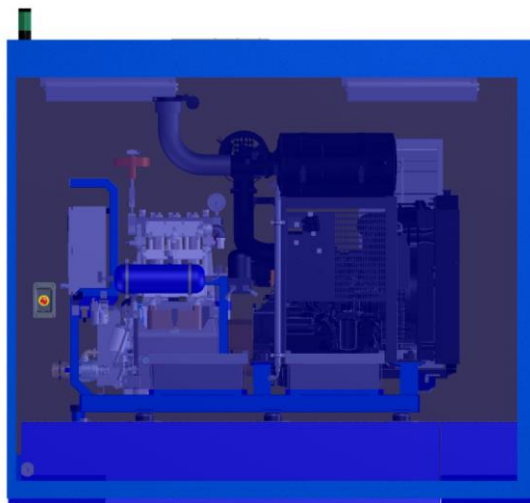
B) Road-going Trailer mount + Soundproof canopy/Telaio con carrello stradale + cabina insonorizzata



In the trailer configuration/trolley configuration the base unit is mounted on double axis/trolley made of treated steel, for a maximum total weight of 3.5 tonnes, and covered with a high-strength fiberglass casing equipped with ventilation grilles. Ideal for application on construction sites where ease of transport is a must.

**Dimension** (approx.): 3.000x1.750x2.250 mm  
**Weight** (approx.): 3.500 kg

Container on demand / Container su richiesta



The interior fittings of containers represent a customized solution for special needs linked in particular to their use on offshore platforms.

**Dimension** (approx.): 3.000x2.500x2.600 mm  
**Weight** (approx.): 3.500 kg

**DOCUMENTATION**

**DOCUMENTAZIONE**



Use & Maintenance manual, CE and Origin Certificate.

*Manuale uso e manutenzione, certificato CE, Certificato di origine.*



Further documentation or certificates are optional and they must be defined before the order.

*Ulteriore documentazione o certificati solo a richiesta e devono essere definiti prima dell'ordine di acquisto.*

**OPTIONAL**

**OPZIONI**

**OPTIONS**

Booster pump

**OPZIONI**

Pompa centrifuga